

## Prime High Gloss

Prime High Gloss collection offers surfaces with exceptional mechanical properties, ensuring robustness and longevity. Its visual characteristics are striking, featuring a sleek, high gloss finish that enhances any space with a modern, elegant look. Durability is a key feature, with the surfaces resistant to scratches, impacts, and everyday wear. Prime High Gloss finish not only adds a touch of sophistication but also maintains its pristine condition over time, providing both beauty and resilience.

## Onyx Super Matte

Onyx Super Matte is the result of implementation of truly innovative and unique production technologies for Super Matte Lacquering and it combines crucial physical and mechanical characteristics, which until now hasn't possible to achieve in one sole product: Astonishing warm, soft, pleasant and natural feeling, being simultaneously highly resistant to scratches, abrasion, fingerprints and shining spots. Soft Touch Super Matte panels maintain the highest resistance to various chemical products and substances, as well to extreme environments (dry and wet heat, water steam, cold check). Color stability and light fastness assure long time usage.



[www.oneskin.pt](http://www.oneskin.pt)

# Onyx & Prime

Exclusive and Unique Super Matte and High Gloss Lacquered Panels

by ONESKIN

## Solid colors



Arctic White Sunny White Oyster Sahara Cashmere



Tortora Light Grey Grey Lava Grey Petroleo



Black Light Blue Denim Blue Clay Red Garnet Red



Cloud Green Light Green Olive Green Mineral Green

## Woods



Porto Oak 1 Porto Oak 2 Porto Oak 3 Black Oak



Natural Oak Old Oak White Elm Smoked Elm

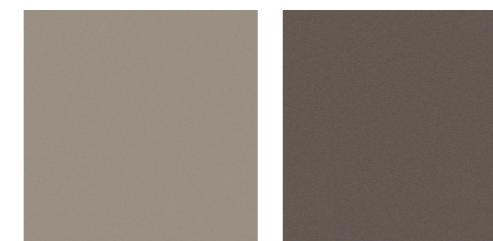


Light Walnut Natural Walnut Garnet Walnut



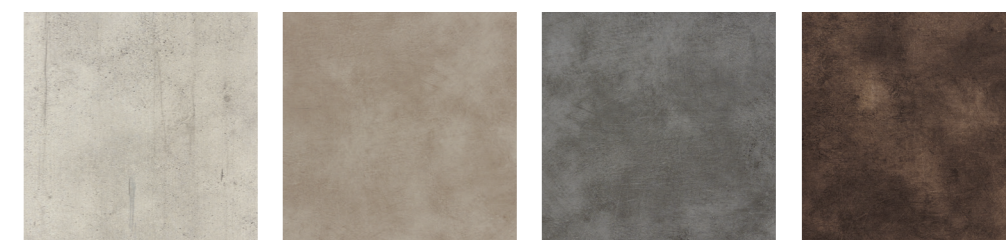
Torino Oak 1 Torino Oak 2 Salvador Oak Eternity Oak

## Metallics



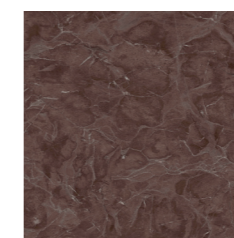
Vision Mineral Coffee

## Stones



White Concrete Moka Cement Natural Cement Brown Cement

## Marbles



Ruby Marble

Colors in this catalogue may differ from actual samples due to variations in graphic reproduction techniques. Please refer to physical samples for accuracy.

**The color is a power  
which directly  
influences the soul.**

Wassily Kandinsky